



2024 KITCHEN  
**DESIGN AWARDS**



## **RECOGNIZING OUTSTANDING PROJECTS BY DESIGNERS OF KITCHENS**

*The KCMA® Design Awards program recognizes outstanding kitchen designs by kitchen designers, interior designers, and architects practicing in United States to promote public interest in cabinet design excellence. The competition focuses attention on the quality of the cabinet environments within kitchens, while highlighting the important role designers play in every community.*



# AN IMPORTANT MESSAGE FROM BETSY NATZ, CEO, KITCHEN CABINET MANUFACTURERS ASSOCIATION



The Kitchen Cabinet Manufacturers Association (KCMA) has recognized Natalia Pierce, CMKBD from Detail by Design studio in Ontario, Canada as its first-place winner in the association's first KCMA Design Awards competition. The Second Award for 2nd Best Kitchen went to Cassidy Jones, from Slate Creek Builders who used cabinets manufactured by KCMA member Dura Supreme Cabinetry. Third Place was awarded to Michael Horton from Horton Harper Architects, who used cabinets manufactured by KCMA member Corsi Group, Inc.

This is KCMA's first awards program, and I'm delighted to share with you ALL the of the designers who entered in this LOOK BOOK. Please take a few minutes to explore these wonderful creations.

What hard work these designers do! And I'm fortunate to represent the top cabinet manufacturers in the country – the products that they all used in their designs came from KCMA members.

Entries were judged by a panel of six all-star judges on seven separate categories: Innovation, Aesthetics, Functionality, Durability, Utility, Emotional Quotient (EQ) and an Overall Rating. You'll find backgrounds on them within our LOOK BOOK.

Finally, I wanted you to know the KCMA Design Award Program was the association's way of providing a great opportunity for architect, interior design, builder, remodeler, and kitchen and bath design firms to showcase their best designs, gain recognition among their peers, and build exposure for their work and firm.

The field of entries, while small, represented the crème de la crème of designers, and I'm sure as awareness builds about our new program – which involves KCMA member cabinet companies as part of the criteria for entry – it will only expand in bringing together great designs.

Thanks to all for participation, and we look forward to the next program!

Enjoy the LOOK BOOK.

Betsy Natz  
Chief Executive Officer



# JUDGES



**AMY A WITTENBACH**

Amy is the Director of Design at Donna Figg Design. A registered Interior Designer with 18 years of experience, she has been involved in multiple project types working with a diverse group of clients. Her understanding of the powerful intersections of consumer experiences and interior design provides her with unique perspectives to the Donna Figg Design team.



**JENNY PROVOST**

Founder of K2 Design Group, Inc., Jenny has designed many residential structures, residential interiors, business interiors and hospitality projects such as club houses and restaurant for over thirty years. Her studies in architecture and interior design in the United States and Canada, combined with years of continuing education have led to a thorough and up-to-date knowledge of current construction and interior design products, practices and methods. The firm enjoys an international role, serving clients from England, Ireland, Russia, Panama, United Arab Emirates, Cyprus, Israel, St. Kitts, the Bahamas, and Canada.



**SHARON L. SHERMAN**  
CKD, ASID, NCIDQ, CID

Sharon is a Founder and Principal of Thyme & Place Design and is an award winning designer who has been practicing luxury kitchen, bath, and interior design for the past two decades. Her focus is on creating interior environments for her clients that combine health, wellness, function, beauty, and comfort. A former past President of the New Jersey chapter of the American Society of Interior Designers, Sharon is also a member of Kitchen & Bath Business Magazine's Editorial Advisory Board, a KBB Magazine's Praiseworthy Pick in 2022 and Kitchen Bath Design News Innovator of the Year award recipient in 2022. Her Award-winning designs and editorial comments have been featured in Forbes, The New York Times, The Wall Street Journal, Design Milk, Furniture Lighting & Décor, Designers Today, and more.



**GARY JAY PAUL**

Gary opened his studio upon receiving his Master of Architecture from Harvard University's Graduate School of Design and his Bachelor of Architecture from the Boston Architectural Center's School of Architecture. His extensive body of work ranges from new residential construction and renovations, interior and landscape design, as well as commercial design projects. Based in New York City, Gary's projects have included sites across the United States and in the Caribbean. Gary taught Architecture and Interior Design at Parsons School of Design, NYU, NYIT and at Altos de Chavon, in the Dominican Republic. Gary has been a guest critic at Harvard, Yale, University of Illinois in Chicago and City College of New York, Schools of Architecture.



**LANCE STRATTON**

Lance is an award-winning kitchen and bath specialist and full-service design professional known for the outstanding craftsmanship and customer service through his firm Studio Stratton. Projects from San Diego and Palm Desert to Mexico and London benefit from the attention to detail and quality workmanship he offers, with the key being the research he spends on each project (Lance is one of the region's few design professionals who provides detailed hand drawings). The work he has done has appeared in publications nationwide.



**SHEA PUMAREJO**

Shea is the seasoned interior designer and CEO of her boutique renovation and design firm, Younique Designs based in San Antonio, Texas. Her innate ability to reimagine properties into forever family homes is a mainstay of her design philosophy, contributed to renovating over 80 kitchens, managing over 300 job sites and bringing her keen construction expertise to each remodel project. She has won international acclaim for her work which was featured in Architectural Digest, The Wallstreet Journal, Forbes and Houston Lifestyles and Homes Magazine. As a Certified Master Kitchen and Bath designer with more than 15 national design awards including nine of the prestigious NKBA awards and two projects shortlisted in the International Design and Architecture Awards in London, England, Shea is one of the most recognized authorities in renovation design in San Antonio.



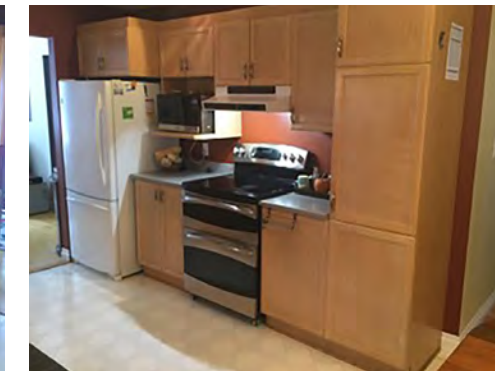
# 1

## DESIGNER **NATALIA PIERCE** CMKBD

Pierce planned to ensure the optimal flow of functions. Every cabinet was organized for ideal storage locations for tools and appliances.



### BEFORE PHOTOS



#### Judge said:

*"The before and after is remarkable... it appears to be a completely different home! I love everything about this kitchen."*

#### COUNTERTOPS

**Primary Countertop Manufacturer**  
Silestone

**Primary Countertop Material**  
Quartz

#### APPLIANCES

**Stove/Range**  
Fisher&Paykel

**Refridgerator**  
Fisher&Paykel

**Oven**  
Fisher&Paykel

**Microwave**  
Fisher&Paykel

**Dishwasher**  
Fisher&Paykel

#### EXTRAS

**Fixtures**  
Wine fridge column also Fisher&Paykel

**Lighting**  
Custom designed

**Did you specify any cabinet accessories?**  
Trash Can Pull Out, Drawer Organizers,  
Utility Tip Out Trays



# SUBTLE ELEMENTS

**KCMA Certification**  
ESP

**Cabinets made by**  
Cuisine Ideale

**Cost of Remodel**  
\$100,000+

**Approx. cabinetry cost**  
\$71,000 - \$80,000

**Approx. remodel square footage**  
500sq ft

**Cabinet Color(s)**  
Black, Light Natural Wood

**Kitchen Layout**  
Galley Kitchen

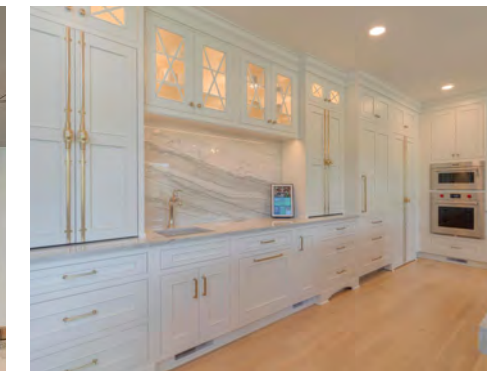
**Design Style**  
Contemporary/Modern



# 2

## DESIGNER CASSIDY JONES

Jones maximizes golf and mountain views overhauling the kitchen's aesthetic and finish level to give the homeowners the storage they wanted and also addressing the lack of natural light. Bringing in features and fixtures, her innovative solutions brought powerful aesthetics to the room.



**Judge said:**  
"Magical. Just lovely. Great use of materials. Bold lighting offsets more expected style."

### COUNTERTOPS

**Primary Countertop Material**  
Opus White Quartzite

### APPLIANCES

**Stove/Range**  
Wolf 48" Rangetop SRT484DG-LP

**Refridgerator**  
Thermador T36IR905SP and Thermador T24IF905SP with custom panels

**Oven**  
Wolf Oven SO30PM/S/PH

**Microwave**  
Wolf SPO30PM/S/PH

**Dishwasher**  
Cove DW2450 with custom panel

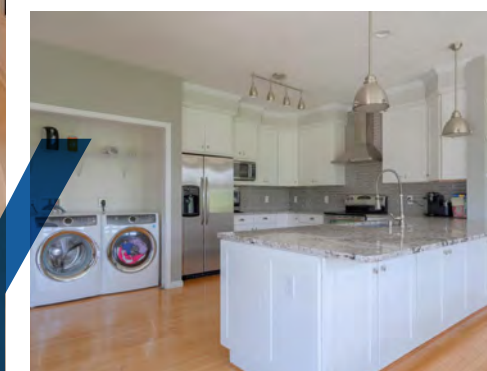
### EXTRAS

**Fixtures**  
Warming Drawer with custom panel: KEWS175BPA , Ice maker with custom panel: UHNB315-IS01A, Summit Drawer Refrigerator with Custom Panel FF1DSS24, Custom Stainless and Copper Hood

**Lighting**  
Visual Comfort Morris Pendants SK 5010GI-C

**Did you specify any cabinet accessories?**  
Trash Can Pull Out, Drawer Organizers, Cabinet Organizers, Vertical Spice Rack, Utility Tip Out Trays, Hidden walk through pantry, charging drawers

BEFORE PHOTOS



**KCMA Certification**  
ESP

**Cabinets made by**  
Dura Supreme Cabinetry

**Cost of Remodel**  
\$100,000+

**Approx. cabinetry cost**  
\$101,000+

**Approx. remodel square footage**  
600sq ft

**Cabinet Color(s)**  
Gray, White/Off-white

**Kitchen Layout**  
L-Shaped Kitchen

**Design Style**  
Transitional



# 3

## DESIGNER **MICHAEL HORTON**

Horton uses white surfaces contrasted with black detailing to allow the home's geometry to speak for itself in this stunning 3-bedroom, 3-bathroom home was designed for contemporary city living.



**Judge said:**

*"A beautiful space.  
Well executed."*

### COUNTERTOPS

**Primary Countertop Manufacturer**  
Mont - Incognito

**Primary Countertop Material**  
Honed Granite

### APPLIANCES

**Stove/Range**  
Fisher Paykel

**Refridgerator**  
Fisher Paykel

**Oven**  
Fisher Paykel

**Dishwasher**  
Fisher Paykel

### EXTRAS

**Fixtures**  
Riobel

**Lighting**  
Sonneman

**Cabinet accessories**  
Trash Can Pull Out, Drawer Organizers,  
Vertical Spice Rack, Lazy Suzan



# CLEVELAND

# CONTEMPORARY

**KCMA Certification**  
A161.1 Quality

**Cabinets made by**  
Corsi Group, Inc.

**Cost of Remodel**  
\$100,000+

**Approx. cabinetry cost**  
\$21,000 - \$30,000

**Approx. remodel square footage**  
2,100sq ft

**Cabinet Color(s)**  
Black, Medium Natural Wood

**Kitchen Layout**  
L-Shaped Kitchen

**Design Style**  
Contemporary/Modern



# DESIGNER ASHLEIGH SCHROEDER

Thorough basement renovation with a moody, sophisticated vibe. Custom bar area, sleek quartz countertops, and meticulous attention to detail.



# MOODY TRANSFORMATION

**Cabinets made by**  
Hi-Lo Industries, Inc dba  
Bridgewood Custom Cabinetry

**Cost of Remodel**  
\$100,000+

**Approx. cabinetry cost**  
\$21,000 - \$30,000

**Approx. remodel square footage**  
806sq ft

**Cabinet Color(s)**  
Blue

**Kitchen Layout**  
Galley Kitchen

**Design Style**  
Contemporary/Modern



BEFORE PHOTOS



**Judge said:**

*"Beautifully realized space which captured the moody vibe the client was looking for."*

## COUNTERTOPS

**Primary Countertop Manufacturer**  
Silestone

**Primary Countertop Material**  
Quartz

## EXTRAS

**Fixtures**  
Franke, Delta

**Lighting**  
Mariana

**Did you specify any cabinet accessories?**  
Trash Can Pull Out, Cabinet Organizers



# DESIGNER PEG D'ONOFRIO-MORAN

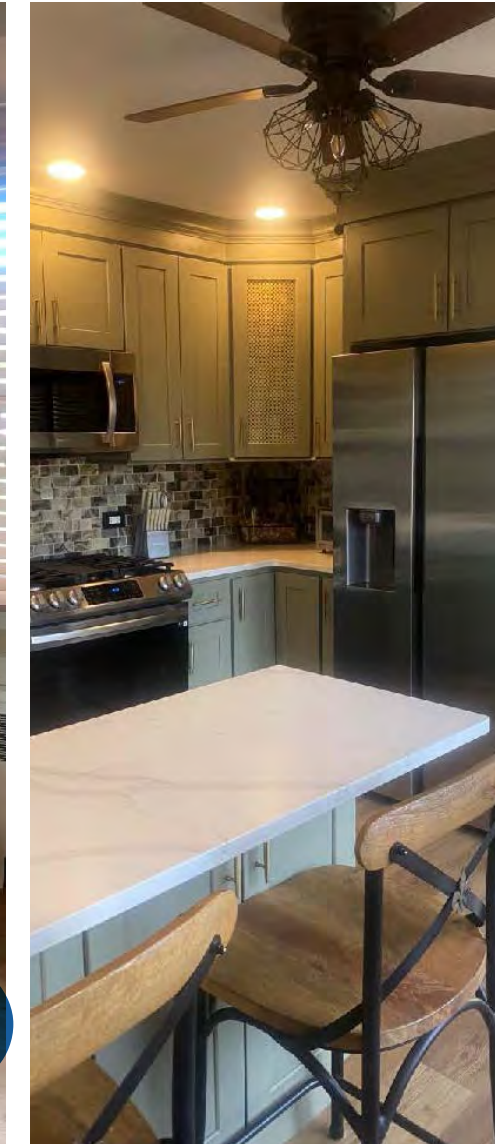
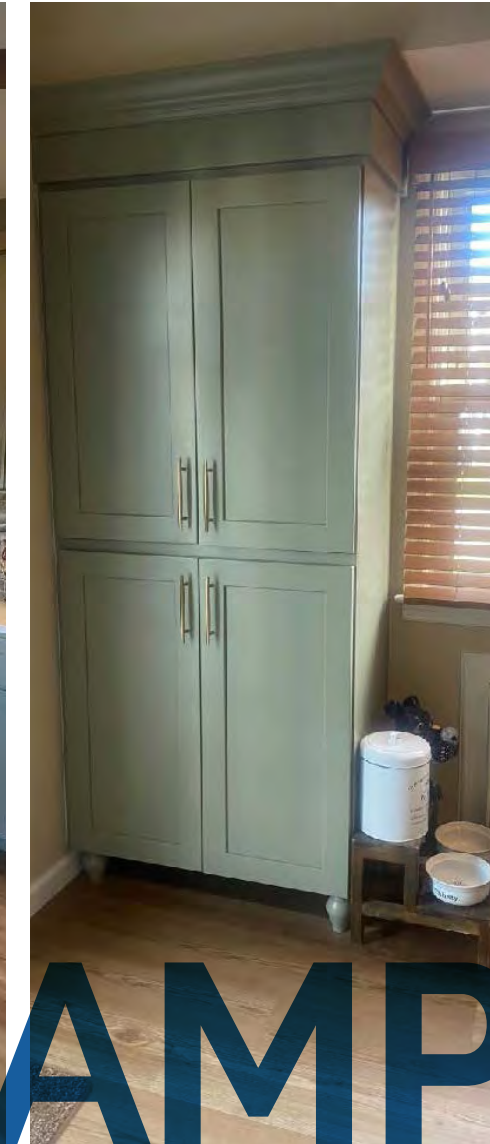
Bring kitchen into 2021, update style, color, functionality. Create additional workspace and storage.

BEFORE PHOTOS



**Judge said:**

*"Small but thoughtful."*



## COUNTERTOPS

**Primary Countertop Manufacturer**  
Radianz

**Primary Countertop Material**  
Man Made Quartz

## APPLIANCES

**Stove/Range**  
Samsung

**Refrigerator**  
Samsung

**Oven**  
Samsung

**Microwave**  
Samsung

**Dishwasher**  
Samsung

## EXTRAS

**Did you specify any cabinet accessories?**  
Trash Can Pull Out, Drawer Organizers,  
Cabinet Organizers, Lazy Suzan

# MODERN REVAMP

**KCMA Certification**  
A161.1 Quality

**Cabinets made by**  
RiverRun Cabinetry

**Approx. cabinetry cost**  
\$20,000-\$30,000

**Approx. remodel square footage**  
119sq ft

**Cabinet Color(s)**  
Green

**Kitchen Layout**  
U-Shaped Kitchen

**Design Style**  
French



# DESIGNER CATHY PITS

Transformed mountain retreat with cleverly concealed posts and a harmonious blend of warm cedar, light gray cabinets, and a smokey blue island. Copper accents add the finishing touch.



**Judge said:**  
"Good result in difficult space."

## BEFORE PHOTOS



## COUNTERTOPS

**Primary Countertop Manufacturer**  
MSI

**Primary Countertop Material**  
Statuary Classique

## APPLIANCES

**Stove/Range**  
36" freestanding gas miele

**Refridgerator**  
36" Bosch

**Dishwasher**  
24" Bosch

## EXTRAS

**Fixtures**  
Farm Sink 930403

**Did you specify any cabinet accessories?**  
Trash Can Pull Out, Cabinet Organizers, Vertical Spice Rack, Lazy Suzan

**KCMA Certification**  
A161.1 Quality

**Cabinets made by**  
MasterBuilt Cabinets,  
Showplace Cabinetry

**Cost of Remodel**  
\$100,000+

**Approx. cabinetry cost**  
\$16,000 - \$20,000

**Approx. remodel square footage**  
2000sq ft

**Cabinet Color(s)**  
Blue, Gray

**Kitchen Layout**  
L-Shaped Kitchen

**Design Style**  
Other

# MOUNTAIN



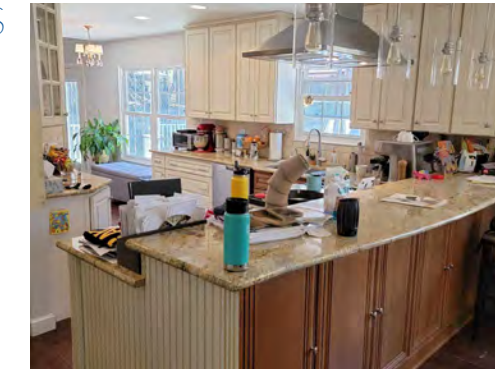
# RETREAT



# DESIGNER BREEZY-TIPTON GORMAN

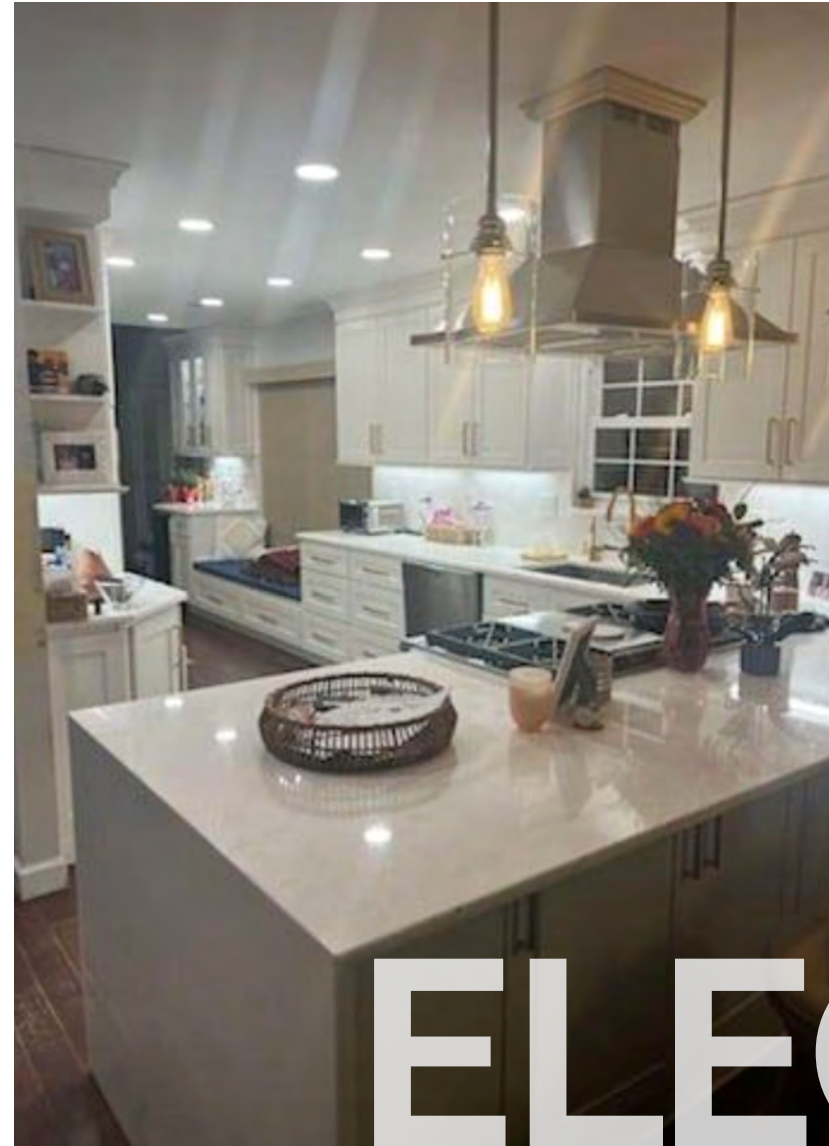
Repeat client's traditional taste transformed into an all-white kitchen with White Rhino Marble, high backsplashes, and a waterfall countertop. Reused appliances, added storage, and Navy cabinets in the laundry room added Annapolis flair.

BEFORE PHOTOS



**Judge said:**

*"Well executed."*



## COUNTERTOPS

**Primary Countertop Manufacturer**  
In Home Stone

**Primary Countertop Material**  
MARBLE -White Rhino

## APPLIANCES

**Stove/Range**  
VIKING GAS COOKTOP

**Refridgerator**  
GE

**Oven**  
GE

**Microwave**  
GE

**Dishwasher**  
GE

## EXTRAS

**Did you specify any cabinet accessories?**  
Trash Can Pull Out, Drawer Organizers, Cabinet Organizers, Vertical Spice Rack, Lazy Suzan, Roll trays for storage in pantry cabinets

**KCMA Certification**  
A161.1 Quality

**Cabinets made by**  
RiverRun Cabinetry

**Cost of Remodel**  
\$50,000 - \$75,000

**Approx. cabinetry cost**  
\$21,000 - \$30,000

**Approx. remodel square footage**  
900sq ft

**Cabinet Color(s)**  
White/Off-white

**Kitchen Layout**  
Peninsula Kitchen

**Design Style**  
Transitional

ELEGANT WHITENESS



# DESIGNER RUTH ANN TAYLOR

Transformed kitchen with cherry cabinets, smooth quartz countertops, and a two-height island. Thoughtfully designed for functionality and aesthetics, it seamlessly blends with the existing natural wood paneling.

## Judge said:

*"I really love this space, and your experienced response to the homeowner's physical needs."*

BEFORE PHOTO



## COUNTERTOPS

**Primary Countertop Manufacturer**  
Cosentino Silestone

**Primary Countertop Material**  
Quartz

## APPLIANCES

**Stove/Range**  
Miele Induction

**Refridgerator**  
Frigidaire separate fridge/freezer

**Oven**  
Bosch side opening

**Microwave**  
Sharp drawer

**Dishwasher**  
Bosch

## EXTRAS

**Fixtures**  
Brushed nickel faucet

**Lighting**  
existing home lighting, under cabinet lighting added in pantry area

**Did you specify any cabinet accessories?**  
Trash Can Pull Out, Drawer Organizers, Cabinet Organizers, Spice inserts beside cooktop in roll out trays, tray divider storage, Pantry tall cabinets and bookshelves, pet feeding area in pantry, secondary sink for gardening in pantry

**KCMA Certification**  
A161.1 Quality

**Cabinets made by**  
Bishop Cabinets, Inc.

**Cost of Remodel**  
\$50,000 - \$75,000

**Approx. cabinetry cost**  
\$31,000 - \$40,000

**Approx. remodel square footage**  
400sq ft

APPLIED BEAUTY



# DESIGNER LYNN SCHRAGE

Coastal charm meets functionality in this kitchen. A spacious island, corner pantry, and soft color palette create an inviting space for casual entertaining.



**Judge said:**

*"Well appointed and nice use of neutrals."*

## COUNTERTOPS

**Primary Countertop Manufacturer**  
Coastal

**Primary Countertop Material**  
White Granite

## APPLIANCES

**Stove/Range**  
Bosch

**Refridgerator**  
Bosch Columns with Stainless panels

**Microwave**  
GE Profile

**Dishwasher**  
Bosch

## EXTRAS

**Fixtures**  
Kohler Crue Faucet

**Lighting**  
Hinkley Cement Pendants

**Did you specify any cabinet accessories?**  
Trash Can Pull Out, Drawer Organizers, Cabinet Organizers, Vertical Spice Rack

**KCMA Certification**  
A161.1 Quality

**Cabinets made by**  
Corsi Group, Inc.

**Cost of Remodel**  
\$50,000 - \$75,000

**Approx. cabinetry cost**  
\$41,000 - \$50,000

**Approx. remodel square footage**  
250sq ft

**Cabinet Color(s)**  
White/Off-white

**Kitchen Layout**  
L-Shaped Kitchen

**Design Style**  
Coastal

# ISLAND

# OASIS

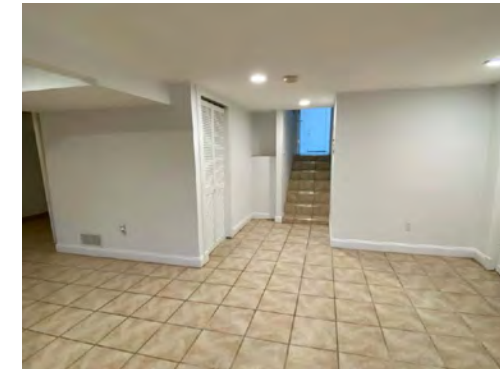


# DESIGNER TRACY STEPHENS

Compact, efficient kitchen with smart storage and a bold blue color scheme. Whimsical backsplash and thoughtful lighting enhance the space.



BEFORE PHOTOS



**Judge said:**  
"Brave use of color and pattern."

## COUNTERTOPS

**Primary Countertop Manufacturer**  
Cambria

**Primary Countertop Material**  
Quartz

## APPLIANCES

**Stove/Range**  
KitchenAid induction

**Refridgerator**  
Blomberg

**Microwave**  
GE

**Dishwasher**  
KitchenAid

## EXTRAS

**Fixtures**  
Brizo Litze

**Lighting**  
Halo 4" LED recessed,

**Did you specify any cabinet accessories?**  
Trash Can Pull Out, Drawer Organizers, Cabinet Organizers, utensil organizer pullout

**KCMA Certification**  
ESP

**Cabinets made by**  
Showplace Cabinetry

**Cost of Remodel**  
\$50,000 - \$75,000

**Approx. cabinetry cost**  
\$16,000 - \$20,000

**Approx. remodel square footage**  
140sq ft

**Cabinet Color(s)**  
Blue

**Kitchen Layout**  
L-Shaped Kitchen

**Design Style**  
Transitional

BLUE RHAPSODY



# DESIGNER RUTH ANN TAYLOR

This classic 'starter' kitchen underwent a transformation. The homeowners wanted to elevate the space for comfortable living, so we modernized it by adding shiplap, waterfall edges, and a custom-built hood.



## COUNTERTOPS

**Primary Countertop Manufacturer**  
Natural Stone by Absolute Stone (fabricator)

**Primary Countertop Material**  
Natural Stone/ Steel Gray Leathered

**Secondary Countertop Manufacturer**  
Private Label quartz by Absolute Stone (fabricator)

**Secondary Countertop Material**  
Calcutta Laza Quartz

**Judge said:**

*"Nice rejuvenation of the kitchen."*

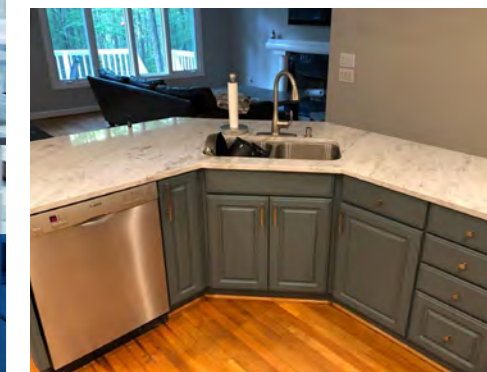
## APPLIANCES

**Stove/Range**  
LG Slide in

**Refridgerator**  
LG

**Dishwasher**  
Bosch

BEFORE PHOTO



## EXTRAS

**Fixtures**  
Black faucet & sink

**Lighting**  
Wicker fixture and recessed cans

**Did you specify any cabinet accessories?**  
Trash Can Pull Out, Drawer Organizers, Cabinet Organizers, Floating shelves, docking drawer, pantry with roll outs, counter mounted cabinet with pocket doors to house small appliances



# ELEVATION

**KCMA Certification**  
A161.1 Quality

**Cabinets made by**  
Bishop Cabinets, Inc.

**Cost of Remodel**  
\$50,000 - \$75,000

**Approx. cabinetry cost**  
\$21,000 - \$30,000

**Approx. remodel square footage**  
300sq ft

**Cabinet Color(s)**  
Charcoal, White/Off-white

**Kitchen Layout**  
L-Shaped Kitchen

**Design Style**  
Farmhouse



# DESIGNER TRACY STEPHENS

In the realm of kitchen metamorphosis, priorities were clear: first, the eviction of the powder room; second, a storage revolution. Within the 144 SF confines, they vowed no “bump out,” opting instead for clever choreography.



#### Judge said:

“Brilliant use of color and pattern. So much fun! Exudes happiness.”

#### COUNTERTOPS

**Primary Countertop Manufacturer**  
MSI

**Primary Countertop Material**  
Quartz

#### APPLIANCES

**Stove/Range**  
Blomberg induction

**Refridgerator**  
Blomberg

**Dishwasher**  
Bosch (reused existing)

#### EXTRAS

**Fixtures**  
Brizo Artesso

**Lighting**  
Halo 4” LED recessed, AFX Koren LED undercabinet lighting, Shades of Light flush mounts

**Did you specify any cabinet accessories?**  
Trash Can Pull Out, Drawer Organizers, Cabinet Organizers, Lazy Suzan, blind corner swing out storage

#### BEFORE PHOTO



# COLOR CANVAS

**KCMA Certification**  
ESP

**Cabinets made by**  
Showplace Cabinetry

**Cost of Remodel**  
\$100,000+

**Approx. cabinetry cost**  
\$21,000 - \$30,000

**Approx. remodel square footage**  
144sq ft

**Cabinet Color(s)**  
Teal

**Kitchen Layout**  
U-Shaped Kitchen

**Design Style**  
Transitional



# DESIGNER RUTH ANN TAYLOR

Up-to-date colors and finishes enveloped the space, replacing dated elements like raised panel glazed finishes and heavy corbels. The warm white painted inset cabinets and white oak accents exude relaxed luxury.



**Judge said:**

“Nice balance of finishes and functionality.”

## COUNTERTOPS

**Primary Countertop Manufacturer**  
Cosentino/Silestone

**Primary Countertop Material**  
Quartz

## APPLIANCES

**Stove/Range**  
Range top-Wolf

**Refrigerator**  
Thermador Columns, wine refrigerator in bar area

**Oven**  
Wolf (reused existing)

**Microwave**  
Sharp Microwave Drawer

**Dishwasher**  
2 dishwashers

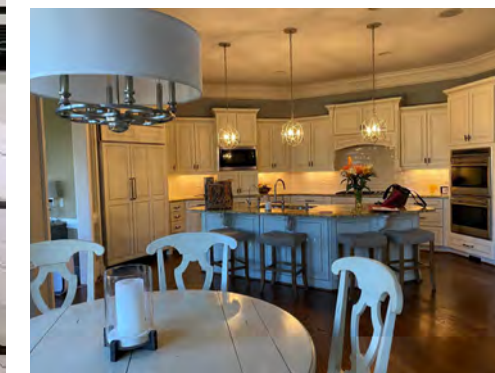
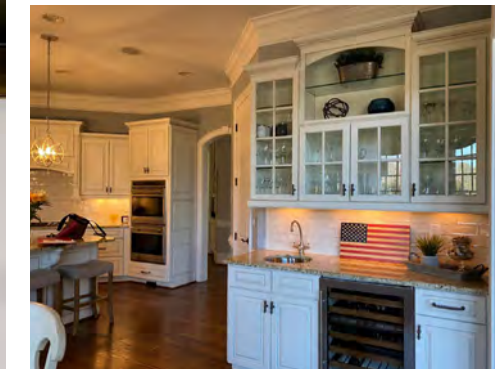
## EXTRAS

**Fixtures**  
black hardware/gold faucets

**Lighting**  
black and gold pendants/LED under cabinet and interior cabinet lighting

**Did you specify any cabinet accessories?**  
Trash Can Pull Out, Drawer Organizers, Cabinet Organizers, Utility Tip Out Trays, Docking drawer, flip down drawer storage right of range top, tray dividers, glass doors, under cabinet & interior LED lighting strips

## BEFORE PHOTOS



# INTENTIONALLY

# CLASSY

**KCMA Certification**  
ESP

**Cabinets made by**  
Cabico, Inc.

**Cost of Remodel**  
\$100,000+

**Approx. cabinetry cost**  
\$101,000+

**Approx. remodel square footage**  
3974sq ft

**Cabinet Color(s)**  
Light Natural Wood,  
White/Off-white

**Kitchen Layout**  
Other

**Design Style**  
Transitional



# DESIGNER RUTH ANN TAYLOR

An L-shaped bar area now serves as a landing space, while the main kitchen moved to the back corner. A focal point with a hood cover, flanked by a pantry and fridge, achieved balance. The spacious island hosts sink cleaning, prep, and ample seating for friends and family.



**Judge said:**  
"Nice use of spacial configuration and function."

## COUNTERTOPS

**Primary Countertop Manufacturer**  
Cosentino/Silestone

**Primary Countertop Material**  
quartz

BEFORE PHOTOS

## APPLIANCES

**Stove/Range**  
LG induction

**Refridgerator**  
Bosch

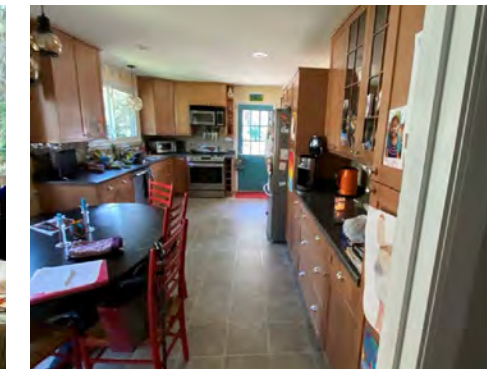
**Microwave**  
Sharp Microwave drawer

## EXTRAS

**Fixtures**  
brushed nickel

**Lighting**  
glass lighting/ LED under cabinet and inside cabinet lighting provided by Taylored Spaces made by Hafele

**Did you specify any cabinet accessories?**  
Trash Can Pull Out, Drawer Organizers, Cabinet Organizers, Corner Organizers, Docking drawer, beverage fridge, glass doors, wine storage, Lemans, utensil trays, roll out trays in pantry, tray dividers



**KCMA Certification**  
A161.1 Quality

**Cabinets made by**  
Koch & Co., Inc.

**Cost of Remodel**  
\$100,000+

**Approx. cabinetry cost**  
\$31,000 - \$40,000

**Approx. remodel square footage**  
300sq ft

**Cabinet Color(s)**  
Blue, White/Off-white

**Kitchen Layout**  
L-Shaped Kitchen

**Design Style**  
Transitional



# DESIGNER NATALIA PIERCE CMKBD

The key features include full prep space on both sides of the range, an oversized hood with a pot-filler, extra counter space around the refrigerator, a double-wide island with smart storage solutions, a Butler's pantry, a coffee center, a window bench with additional storage, and plenty of drawers and specialty storage.



**Judge said:**

*"You rose to the challenge of that layout! Well executed."*

## COUNTERTOPS

**Primary Countertop Manufacturer**  
Mother Nature

**Primary Countertop Material**  
Granite

## APPLIANCES

**Stove/Range**  
Wolf

**Refridgerator**  
Fisher&Paykel

**Oven**  
Wolf

**Microwave**  
Panasonic

**Dishwasher**  
Miele

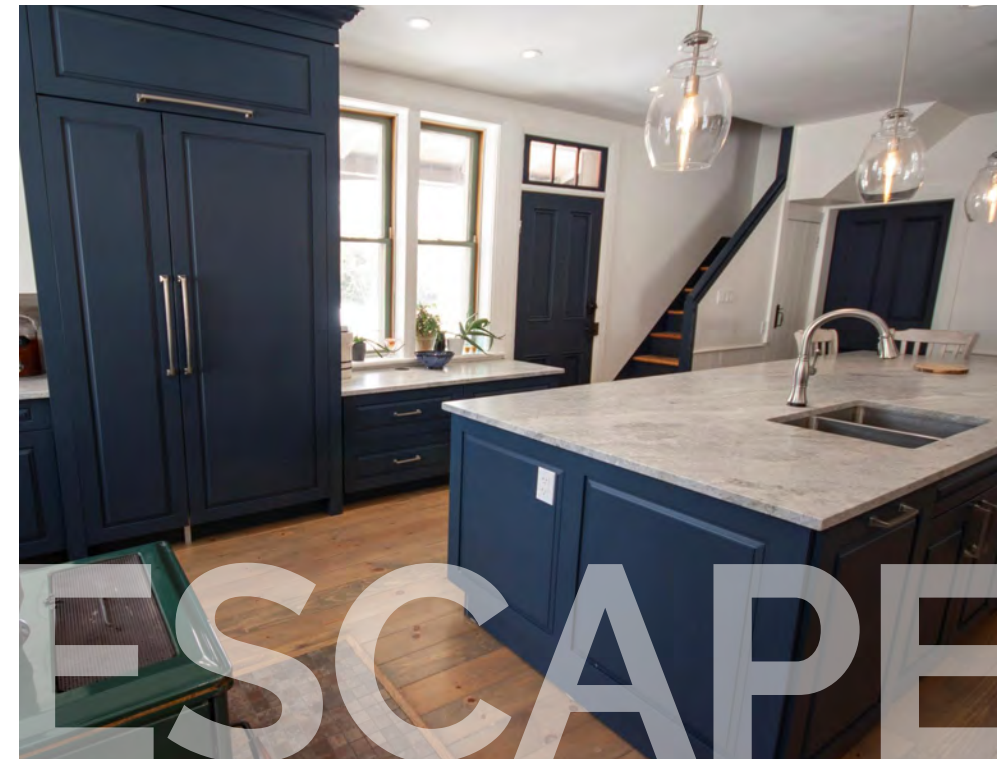
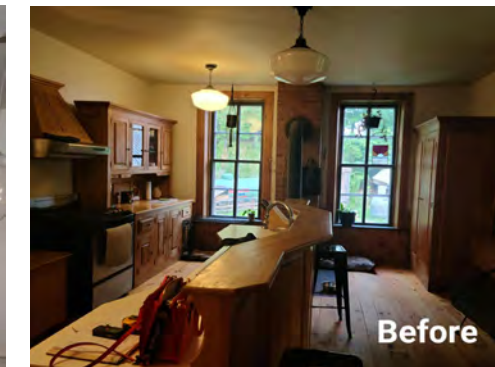
## EXTRAS

**Fixtures**  
Interior cabinet storage solutions

**Lighting**  
Recessed pot lighting and hand-blown glass pendants

**Did you specify any cabinet accessories?**  
Trash Can Pull Out, Drawer Organizers, Cabinet Organizers, baking pan storage in deep drawer, extra shelves for shallow pan storage, heavy duty slides

## BEFORE PHOTOS



**KCMA Certification**  
ESP

**Cabinets made by**  
Cuisine Ideale

**Cost of Remodel**  
\$50,000 - \$75,000

**Approx. cabinetry cost**  
\$31,000 - \$40,000

**Approx. remodel square footage**  
438sq ft

**Cabinet Color(s)**  
Blue, White/Off-white

**Kitchen Layout**  
Other

**Design Style**  
Traditional

# MOUNTAIN

# ESCAPE



# DESIGNER HEATHER POND

The kitchen underwent significant changes, including repositioning windows, removing a structural post, and optimizing the layout. The main challenge was accommodating the clients' request for separate eye-level built-in ovens.



**Judge said:**  
"Vast improvement!  
Much better use of  
space."



## BEFORE PHOTOS



## COUNTERTOPS

**Primary Countertop Manufacturer**  
LG Viatera

**Primary Countertop Material**  
Lumina

## APPLIANCES

**Stove/Range**  
Wolf 36" gas cooktop VW36S

**Refridgerator**  
Sub Zero 42" Classic CL4250S/O

**Oven**  
Wolf SO30TM/S/TH

**Dishwasher**  
Cove DW2450

## EXTRAS

**Fixtures**  
Speed Oven: Wolf SPO30TM/S/TH

**Lighting**  
Kuzco Vega pendants

**Did you specify any cabinet accessories?**  
Trash Can Pull Out, Drawer Organizers,  
Cabinet Organizers

**KCMA Certification**  
A161.1 Quality

**Cabinets made by**  
Corsi Group, Inc.

**Cost of Remodel**  
\$100,000+

**Approx. cabinetry cost**  
\$51,000 - \$60,000

**Approx. remodel square footage**  
200sq ft

**Cabinet Color(s)**  
Dark Natural Wood,  
White/Off-white

**Kitchen Layout**  
U-Shaped Kitchen

**Design Style**  
Transitional

# GLAMOUR TRANSFORMATION



# DESIGNER DENISE MERBETH

Merbeth blends industrial elements of the space with an English country cabinet style for the homeowner's dream kitchen. Inset cabinets and classic latches were selected for the classic English aesthetic.



**Judge said:**  
"Attractive  
and feels "right"."

## COUNTERTOPS

**Primary Countertop Manufacturer**  
ENVI Quartz

**Primary Countertop Material**  
Statuario Roma Quartz

**Secondary Countertop Manufacturer**  
Natural stone

**Secondary Countertop Material**  
Black Mist honed granite

## APPLIANCES

**Stove/Range**  
Ilve range

**Refridgerator**  
Miele integrated refrigerator

**Microwave**  
Sharp microwave drawer

**Dishwasher**  
Bosch integrated dishwasher

## EXTRAS

**Lighting**  
Restoration Hardware

**Cabinet accessories**  
Trash Can Pull Out, Lazy Suzan



**KCMA Certification**  
A161.1 Quality

**Cabinets made by**  
Corsi Group, Inc.

**Cost of Remodel**  
\$50,000 - \$75,000

**Approx. cabinetry cost**  
\$21,000 - \$30,000

**Approx. remodel square footage**  
140sq ft

**Cabinet Color(s)**  
Black, Dark Natural Wood,  
White/Off-white

**Kitchen Layout**  
L-Shaped Kitchen

**Design Style**  
Other



# DESIGNER RUTH ANN TAYLOR

For first-time home buyers, maximizing space was crucial. We expanded the kitchen, improved lighting, and relocated the laundry room to a hall closet. This allowed them to work together comfortably and entertain guests.



**Judge said:**  
"Nice colors and accessories."

## COUNTERTOPS

**Primary Countertop Manufacturer**  
Silestone Cosentino

**Primary Countertop Material**  
Quartz

## BEFORE PHOTOS

## APPLIANCES

**Stove/Range**  
Bosch (was on backorder!)

**Refridgerator**  
Bosch

**Microwave**  
Sharp Microwave Drawer

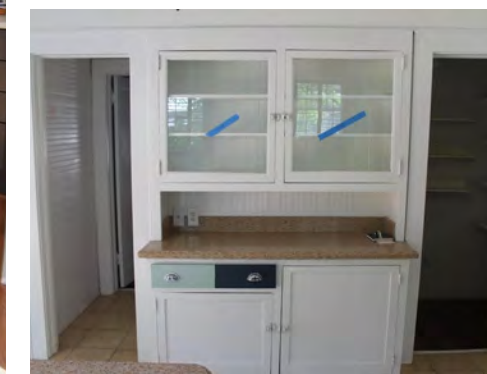
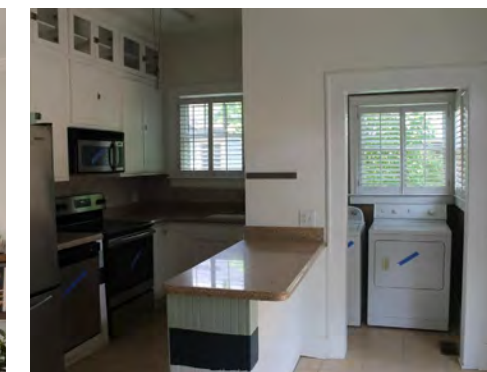
**Dishwasher**  
Bosch

## EXTRAS

**Fixtures**  
Brushed nickel

**Lighting**  
recessed cans

**Did you specify any cabinet accessories?**  
Drawer Organizers, Cabinet Organizers, Lazy Suzan, Corner Organizers, Broom closet, pantry roll outs, floating shelves, double stacked cabinets, wide pots/pans drawers, tray divider, roll out trays, space for spices



**KCMA Certification**  
A161.1 Quality

**Cabinets made by**  
Bishop Cabinets, Inc.

**Cost of Remodel**  
\$100,000+

**Approx. cabinetry cost**  
\$31,000 - \$40,000

**Approx. remodel square footage**  
1600sq ft

**Cabinet Color(s)**  
Blue, White/Off-white

**Kitchen Layout**  
L-Shaped Kitchen

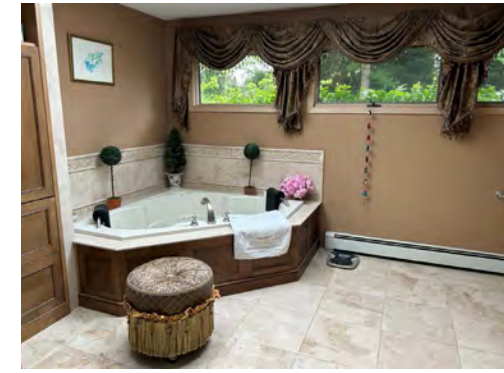
**Design Style**  
Transitional



# DESIGNER AMANDA MELLACE

Our challenge was to transform the outdated traditional bathroom into a modern, refreshing, spa-like space. By opening up the area and using Mint green paint paired with the Parkview door style, we achieved a sleek and clean look.

BEFORE PHOTOS



**Judge said:**

*“Lovely use of color. Definately has a spa like feel.”*

## COUNTERTOPS

Primary Countertop Material  
Alleanza quartz thassos extra

## EXTRAS

Did you specify any cabinet accessories?  
Utility Tip Out Trays, roll outs in bases

**KCMA Certification**  
A161.1 Quality

**Cabinets made by**  
RiverRun Cabinetry

**Cost of Remodel**  
\$10,000-\$20,000

**Approx. cabinetry cost**  
\$5,000 - \$10,000

**Approx. remodel square footage**  
130sq ft

**Cabinet Color(s)**  
Mint Green

**Kitchen Layout**  
Other

**Design Style**  
Contemporary/Modern

# MINI

# REFRESH



# DESIGNER MADISON JACKSON

In this project, we transformed a 1920s New England Arts & Crafts style home with an outdated kitchen and an impractical layout for a family of five. Our solution involved reconfiguring the kitchen by incorporating the original butler's pantry and former kitchen table nook, while relocating the core kitchen area.



**Judge said:**  
"Great layout, nice use of colors and finishes, dynamic impact."

## COUNTERTOPS

**Primary Countertop Manufacturer**  
Emerstone

**Primary Countertop Material**  
Calacatta Classic

## APPLIANCES

**Stove/Range**  
Wolf 36" Six Burner Gas Range

**Refridgerator**  
Bosch 800 Series 36" French Door Stainless Steel

**Oven**  
Wolf E Series 24" Convection Steam Oven

**Dishwasher**  
Bosch 800 Series 24" Stainless Steel

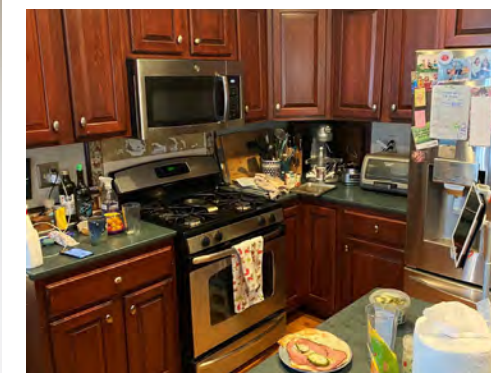
## EXTRAS

**Fixtures**  
Hansgrohe Joleena Faucet in Steel Optic

**Lighting**  
Circa Lighting Cadence Pendants in Polished Nickel & Brushed Steel

**Did you specify any cabinet accessories?**  
Trash Can Pull Out, Drawer Organizers, Cabinet Organizers, Corner Organizers, Spice Drawer Organizer

## BEFORE PHOTOS



**KCMA Certification**  
A161.1 Quality

**Cabinets made by**  
Corsi Group, Inc.

**Cost of Remodel**  
\$100,000+

**Approx. cabinetry cost**  
\$31,000 - \$40,000

**Approx. remodel square footage**  
325sq ft

**Cabinet Color(s)**  
Blue, Dark Natural Wood, White/Off-white

**Kitchen Layout**  
Peninsula Kitchen

**Design Style**  
Transitional



# DESIGNER BREEZY TIPTON-GORMAN

This dated home underwent significant renovations, including removing the old drywall pantry, relocating the doorway, and eliminating the peninsula. The uniquely shaped island now offers a spacious 3ft clearance, allowing for an impressive seated island with a cooktop.



**Judge said:**  
"Nice simple layout and finish selections"

## COUNTERTOPS

**Primary Countertop Manufacturer**  
Emerstone

**Primary Countertop Material**  
Borghini Gold with MITERED ISLAND

## APPLIANCES

**Stove/Range**  
KitchenAide Cooktop

**Refridgerator**  
Ge CAFE FRENCH DOOR BOTTOM FREEZER

**Oven**  
GE CAFE DOULE OVEN

**Microwave**  
GE BASE under counter

**Dishwasher**  
Bosch

## EXTRAS

**Fixtures**  
Sconce lights

**Lighting**  
Recessed led can lighting

**Did you specify any cabinet accessories?**  
Trash Can Pull Out, Drawer Organizers, Cabinet Organizers, Vertical Spice Rack, Lazy Suzan, Corner Organizers, Drip Tray for Sink base cabinet. Transition Angle Base Cabinet, Stainless steel Farm Sink

## BEFORE PHOTOS



# RENOVATION

# TRIUMPH

**KCMA Certification**  
A161.1 Quality

**Cabinets made by**  
RiverRun Cabinetry

**Cost of Remodel**  
\$50,000 - \$75,000

**Approx. cabinetry cost**  
\$21,000 - \$30,000

**Approx. remodel square footage**  
600sq ft

**Cabinet Color(s)**  
Dark Natural Wood, Gray,  
White/Off-white

**Kitchen Layout**  
Other

**Design Style**  
Transitional